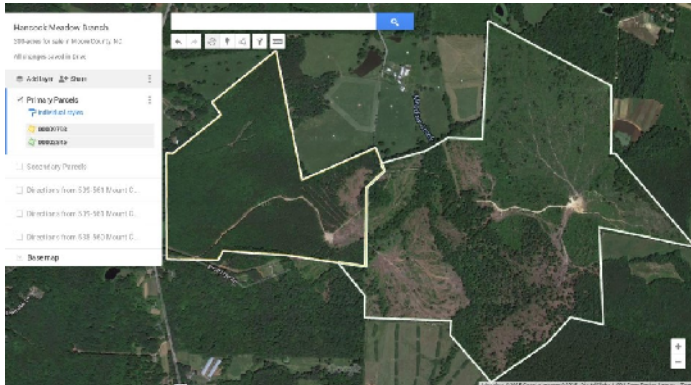


Hancock Meadow Branch



General Information

Address: 561 Mt. Carmel Road
Carthage, NC 28327

Site ID: RTR-15981

County: Moore

In City Limits: No

County Tier Designation: 3

UP or AG Zone:

Former Use: farm land

Type of Location: Stand-Alone

Indus/Bus. Park:

Zoning: Residential Agricultural

Availability & Price

Available Acreage: 308.60

Date Available: 03/05/2015

Sales Price: \$5,007

Terms: per acre

Utilities

Electricity

Service Provider: Randolph EMC

Distance to Transmission System

Distance to Closest Substation

Natural Gas

Service Provider: None Available

Distance To Main:

Main Size:

Distribution Pressure:

Telecommunications

Service Provider: CenturyLink

Fiber Optic:

Digital Switch:

Water

Service Provider: well

Main Size:

Storage Tanks: No

Static Pressure:

Residual Pressure:

Total System Capacity:

Excess System Capacity:

Total System Permitted Capacity:

Waste Water

Service Provider: septic

Main Size:

Feeder Size:

Treatment Type:

Total System Capacity:

Excess System Capacity:

Total System Permitted Capacity:

Fire Protection Service: Robbins Fire District

Certification_Date

Access

Highways and Interstates

Closest Highway: 15, 11.00 miles
Closest Interstate: 73, 14.33 miles

Airports

Closest International Service: Piedmont Triad Intl, 63.16 miles

Closest Commercial or General Aviation Service: Montgomery County, 17.30 miles

Rail

Rail Service Provider: Aberdeen Carolina & Western Railway
Potential for Rail: No

Distance to Rail:

Rail Status:

Port

Closest Ports: Port of Wilmington, 174.70 miles

Marine/Barge

Potential for Barge Access: No

Body of Water:

On the Water: 0.00

Water Depth:

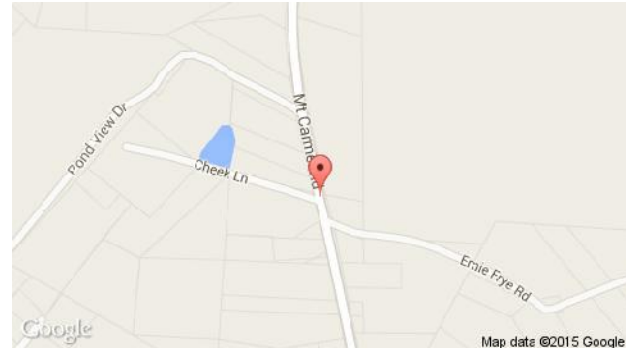
Bulkhead or Docks in place: ,

Education and Training

Closest Community College: Sandhills CC, 19.63 miles

Closest 4-year University: Methodist College, 49.73 miles

Maps



Street Map of Hancock Meadow Branch



State Map of Hancock Meadow Branch

Contact

Tiffany McNeil, Client Services Manager
Economic Development Partnership of North Carolina
tiffany.mcneill@edpnc.com, 919.447.7741

[Click to connect to a metric version of this report](#)

The information in this report is provided by the local and/or regional economic development organizations, which strive to present complete and accurate data.