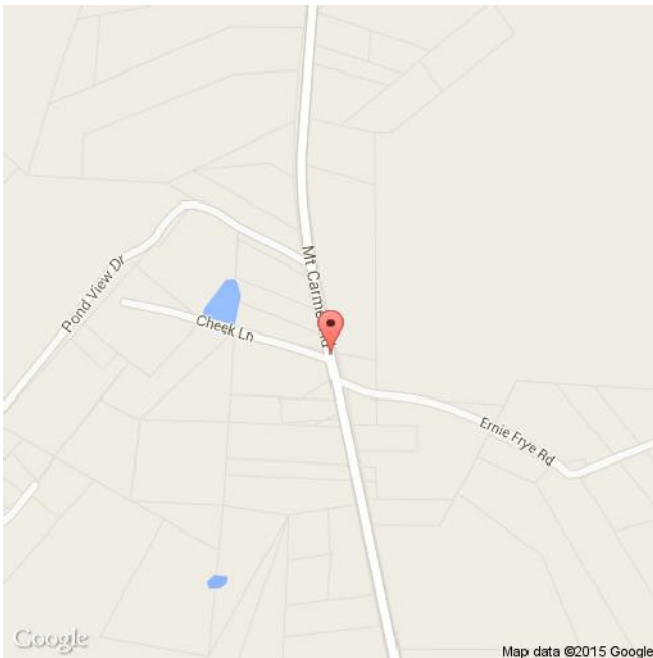


15 Mile Radius Profile Hancock Meadow Branch



Employment

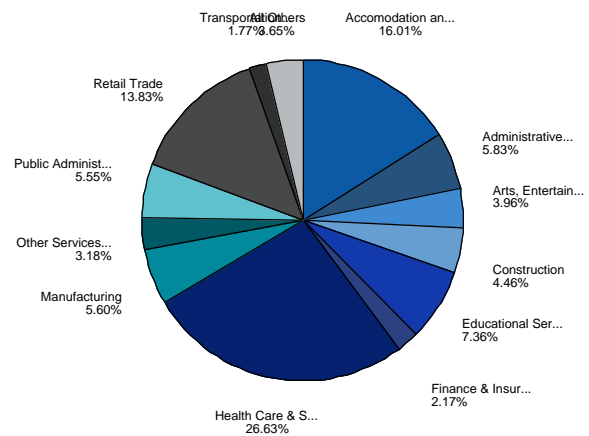
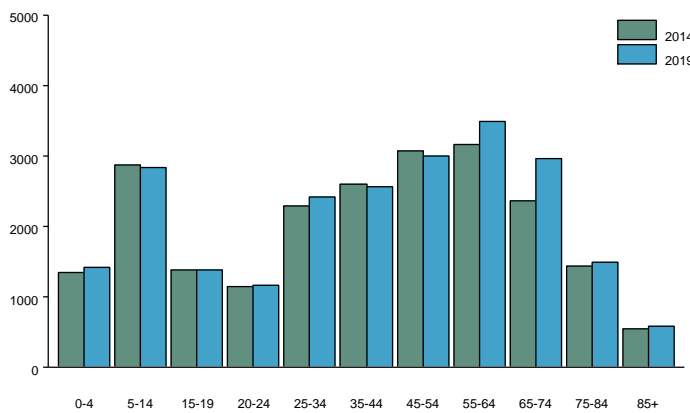
Employees by ownership	
Total all Industries	33,758
Total Government	4,508
Total Private Industry	29,250

Employment by Industry	
Agriculture	0
Mining	0
Utilities	82
Construction	1,402
Manufacturing	1,763
Wholesale Trade	477
Retail Trade	4,350
Transportation & Warehousing	556
Information	263
Finance & Insurance	684
Real Estate & Rental & Leasing	325
Professional & Technical Service	0
Management of Companies & Enterprises	0
Administrative & Waste Services	1,835
Educational Service	2,317
Health Care & Social Assistance	8,379
Arts, Entertainment & Recreation	1,247
Acomodation and Food Services	5,037
Other Services Ex. Public Admin.	1,000
Public Administration	1,746
Unclassified	0

Population

2014 Population:	22,273
2019 Population:	23,335
Projected Change:	4.6%

Population by Age:



Age	Current	Future
20-24	1,149	1,164
25-34	2,295	2,416
35-44	2,611	2,576
45-54	3,071	2,999
55-64	3,173	3,485

Output based on county geographic area
Source: US Bureau of Labor Statistics, QCEW, 2014 2nd Qtr

Output based on census block group level geography
Source: ESRI, Inc.

Employment Cont.

Civilian Labor Force	37,120
Total employed	35,246
Total unemployed	1,874
Unemployment rate	5.0%

Output based on county geographic area

Sources: US Bureau of Labor Statistics, LAUS, Dec2014 Preliminary

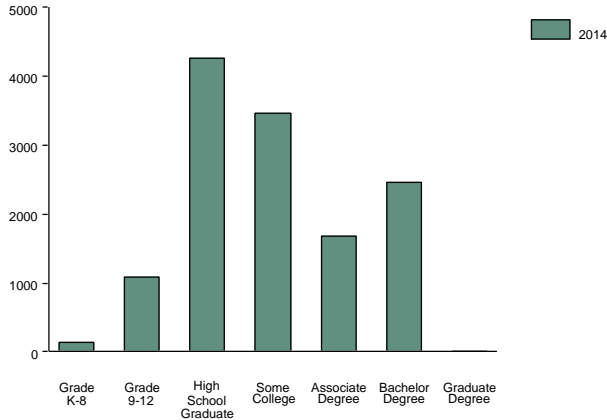
Largest Companies (NC only)

Ingersoll Rand Industrial Sol - Edi	100-249
Kolcraft Enterprises Inc	100-249

Output based on establishment County location

Source: NC Commerce, LEAD, 2014 2nd Qtr

Educational Attainment



Population 25 years and older: with at least a High School Diploma	77%
with at least an Associates Degree	27%
with at least a Bachelor's Degree	16%

Output based on census block group level geography

Source: ESRI, Inc., American Community Survey

Businesses

Total Private Establishments	2,833
Total Private Employees	35,169
Total Manufacturing Businesses	153
Total Manufacturing Employees	4,717

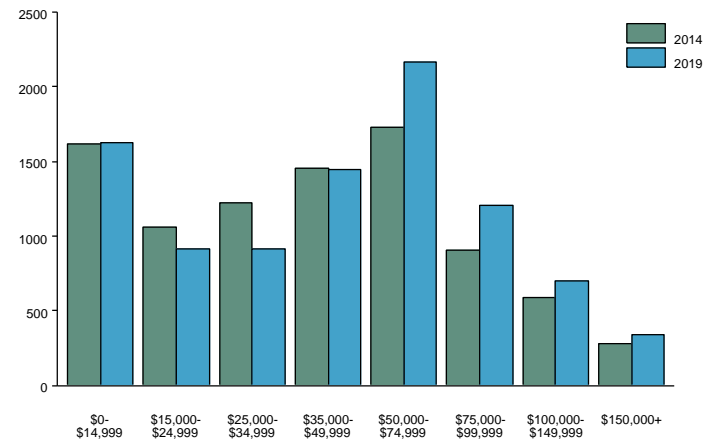
Largest Companies (NC only)

First Health Of The Carolinas Inc	1000+
Moore County Schools	1000+
Pinehurst Llc	1000+
County Of Moore	500-999
St Joseph Of The Pines Hospital Inc	500-999
Cohesive Networks Inc	500-999
Sandhills Community College	500-999
Wal-Mart Associates Inc	250-499
Purple Tie By Ridgewells Llc	250-499
Pinehurst Medical Clinic Inc	250-499

Housing & Income

2014 Total Households:	8,859
2014 Average Home Value:	\$142,719

Household Income:



2014 Average Household Income:	\$50,845
2014 Per Capita Income:	\$20,289

Output based on census block group level geography

Source: ESRI, Inc.

Wages

Average Weekly Wage	\$16.78/hr
Average Weekly Manufacturing Wage	\$19.08/hr

Output based on county geographic area

Source: US Bureau of Labor Statistics, QCEW, 2014 2nd Qtr

Quality of Life

Moore County PropertyTax Rate	0.4650
Average Commuting Time	minutes
Commuting time less than 15 minutes	38%
Commuting time 15-30 minutes	43%
Commuting time more than 30 minutes	19%
Total # of commuters	8,800
Climate & Weather	
Average Annual Temperature	60°
Average January Temperature	34°
Average July Temperature	71°
Weather Risk Index (100 US Avg)	136

Output based on county for tax rate and census block group level geography for rest, FY 2014-15 tax rate, 2011 est commuting, 2011 est commuting time

Sources: NC Revenue; ESRI, Inc. and American Community Survey; Applied Geographic Solutions, multiyear averages and index

* For a full list of data sources, dates, and methodologies see the Data Sources Guide on the homepage.